



Board Number Reader Manual ver: 1.1

1. Introduction	2
2. Board Number Labels	3
3. Software operation.	4

Version information:

Ver 1.0: Initial issue : 04/10/2009

Ver 1.1: Correct mistake (N-E instead of W-S)

1. Introduction

One of the biggest problems during dealing is operator mistakes. Most commonly cards can be dealt to a board with the wrong number. This mistake can be difficult to notice and is often is not picked up during play, resulting in scores being calculated incorrectly.

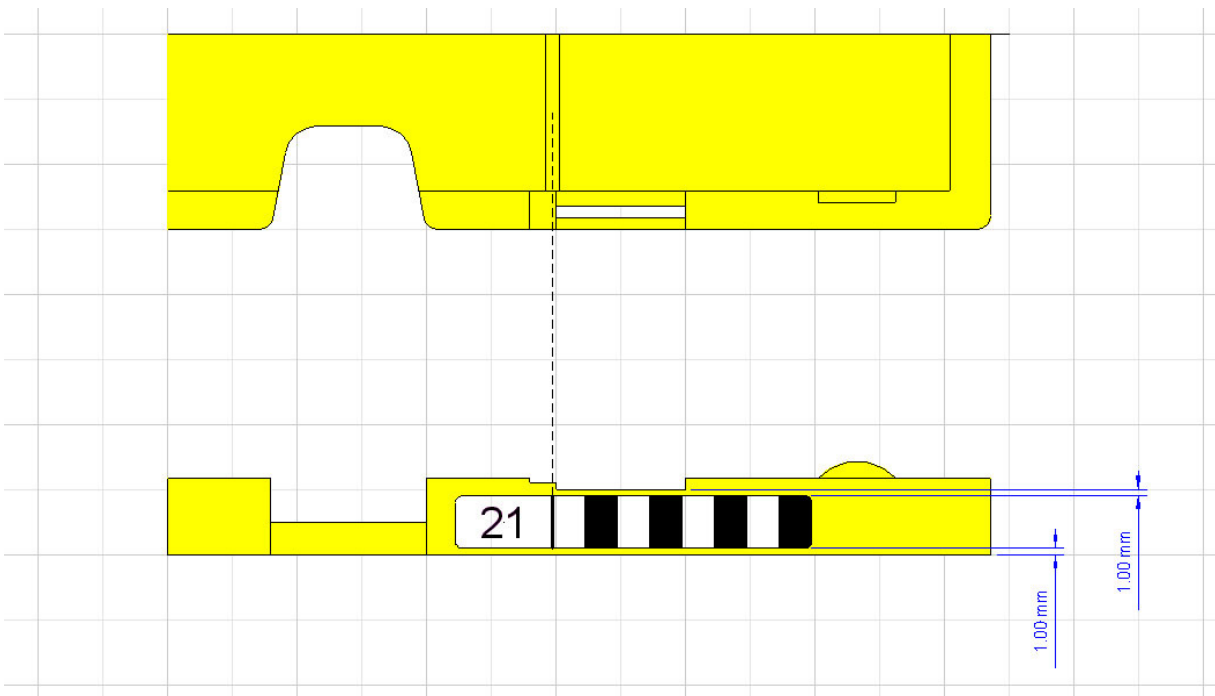
The Dealer4 has a solution for this problem. All machines with serial numbers 4163 and higher are equipped with a Board Number Reader. When a board is inserted into the machine – the board number is read and compared to the currently dealt board. If any mistakes are detected it is reported to the operator.

2. Board Number Labels

The Board number reader uses special bar-coded labels to read the board number. The picture below shows labels attached to the boards:



For correct operation, labels have to be accurately placed in the specific position. The first black line on the right of the number must be aligned with N-E divider on the board:



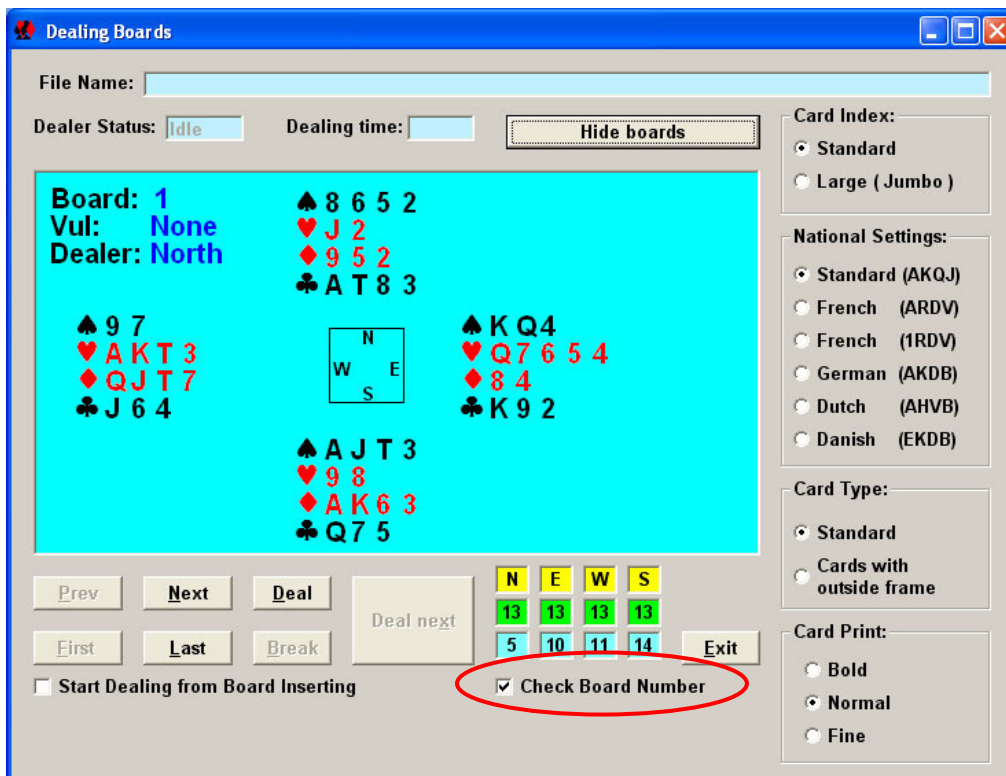
3. Software operation.

To use the Board Number Reader the following versions of software are required:

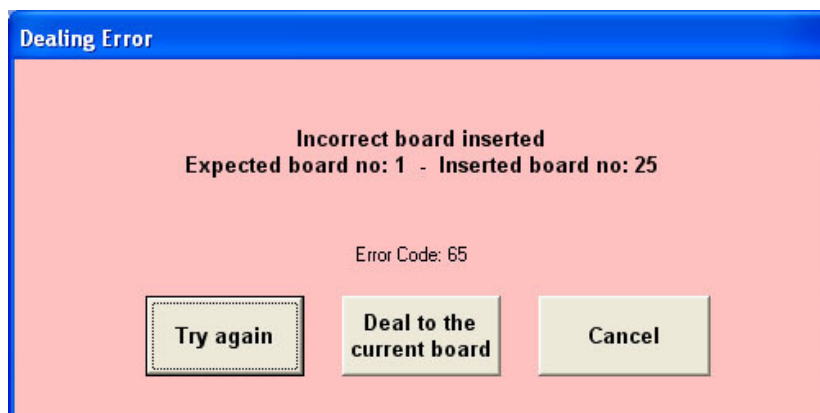
- PC software – version 4.28 or later
- Delaer4 firmware – version 2.40 or later

For software updates and software updates instruction please visit www.dealer4.com

To active Board Number Reader tick the “Check Board Number” box in the “Deal” window:



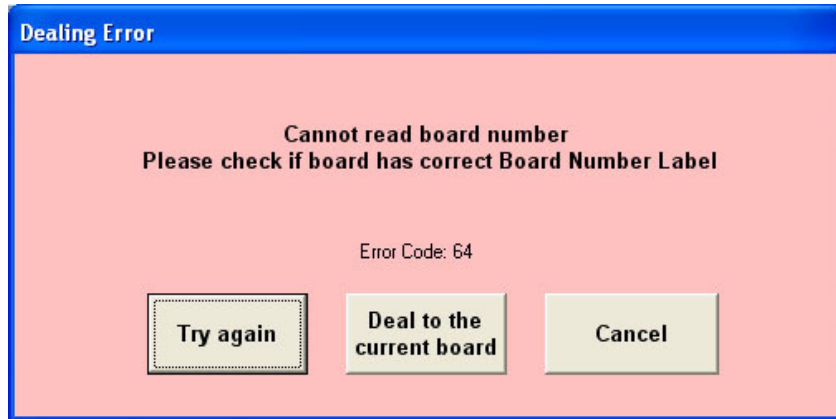
When a board is inserted, the board number will be read and checked. If the number of the board matches the current dealt board – dealing will start. If not – following message will appear:



There are three options:

1. "Try again" – click here after replacing the board with the correct one
2. "Deal to the current board" – click here if you wish to deal to the currently inserted board
3. "Cancel" – this button will cancel dealing.

If the Reader cannot read the board number due to missing or damaged barcode label following message will appear:



Again there are three options:

1. "Try again" – click here after replacing the board with the correct one
2. "Deal to the current board" – click here if you wish to deal to the currently inserted board
3. "Cancel" – this button will cancel dealing.