



Dealer4+ Operation Manual version: 1.0

1. Introduction.....	2
2. Basic information about Dealer4+	3
2.1. Start up.....	3
3. Dealer4+ stand alone functionality	5
3.1. Main Screen	5
3.2. Load Screen.....	6
3.2.1. Dealer4+ Internal Memory functions	6
3.2.2. USB Flash Drive Memory functions	9
3.3. Deal Screen.....	11
3.4. Settings Screen.....	13
4. Dealer4+ operation from PC.....	14
5. Future development	16

Version information:

Ver 1.0: Initial issue : 12/10/2014

1. Introduction

This manual provides basic information about the operation of the Dealer4+. It describes feature of this new model, controls, details provided by the Front Display and other information required to use this version of our machine.

This version of the manual describes Dealer4+ with Display Firmware version 2.10.

In this manual the following signs are used to highlight important information:



Critical information for safety and proper operation of the Dealer4+ machine. Always read and follow.



Warnings.



Additional important information.

2. Basic information about Dealer4+

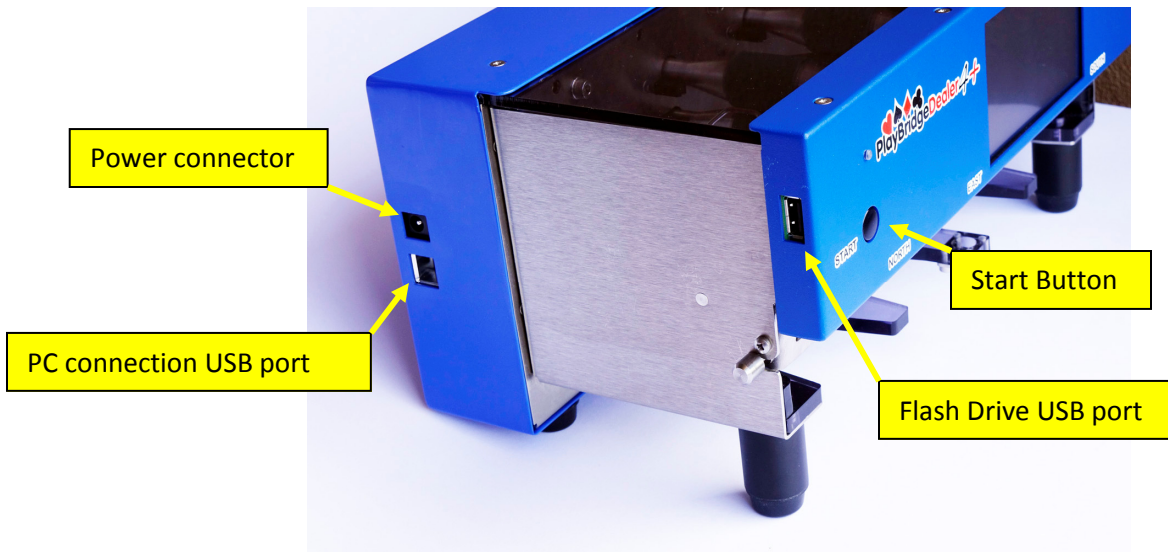
The Dealer4+ (PlayBridgeDealer4+) design is based on the standard model of the Dealer4 (PlayBridgeDealer4) which has been manufactured for the last few years with proven quality and reliability. The main improvement with the Dealer4+ is the implementation of the Front Display. This display allows the user to control the dealing process and thus deal cards without a PC connected. This can be especially useful for small clubs which may have only one computer, thus allowing it to be used for other tasks during dealing. It is also very useful for large events when several machines are in use. In such cases, multiple computers are no longer required.



Please note that the Dealer4+ does not eliminate the need for a PC to prepare deals. A computer is still required to generate boards, analyze and print hand records - but the dealing process can now be performed without a PC connected.

2.1. Start up

The Dealer4+ requires a power supply (provided with the machine) connected to mains outlet and to the power input connector of the machine.



The machine does not have a power switch. To turn it on - press and hold the START button on the front panel of the machine for 2 seconds. It is possible to turn off the machine via a button on the Main Screen of the Front Display.

The Front Display implemented in the Dealer4+ has touch screen functionality which allows navigation thru menus, changing of settings and entering of commands. It is a resistive type of touch screen so it responds only to a single touch. Gestures, multiple finger presses and other similar actions (similar to those on a modern Smartphone) are not supported. Despite that it provides easy and reliable control for all required operation during dealing.

Dealer4+ is equipped with USB host port which allows the user to connect a Flash drive to easily transfer bridge files to the machine. Also the Dealer4+ has the standard USB connection to the PC. It can be operated from the PC exactly the same way as the older model.



It is recommended to use fingers to operate on the touch screen. Never use sharp objects like screwdrivers, pencils, pens etc. to touch the screen. Such "tools" can scratch or even damage the surface of the screen making it unreadable or nonoperational.



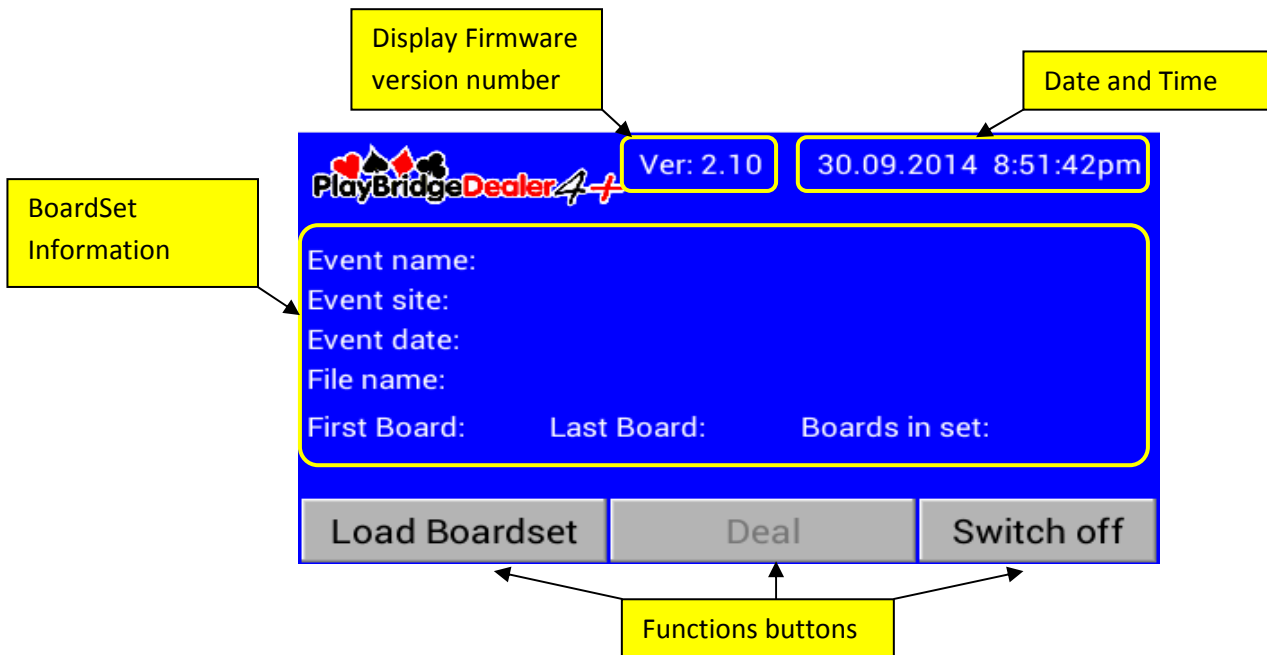
The USB host port is designed only for Flash Drives. Do not connect anything else as it will not work and may damage the electronics inside the machine. Also it is not recommended to connect a portable hard disk drives as these drives are usually formatted in NTFS file system which is not supported by Dealer4+.

3. Dealer4+ stand alone functionality

Dealer4+ can be operated in two modes: connected to the computer or stand alone. This chapter describes stand alone functionality. See chapter 4 for operation while connected to the PC.

3.1. Main Screen

After turning on the machine, the welcome logo and Main Screen will appear:

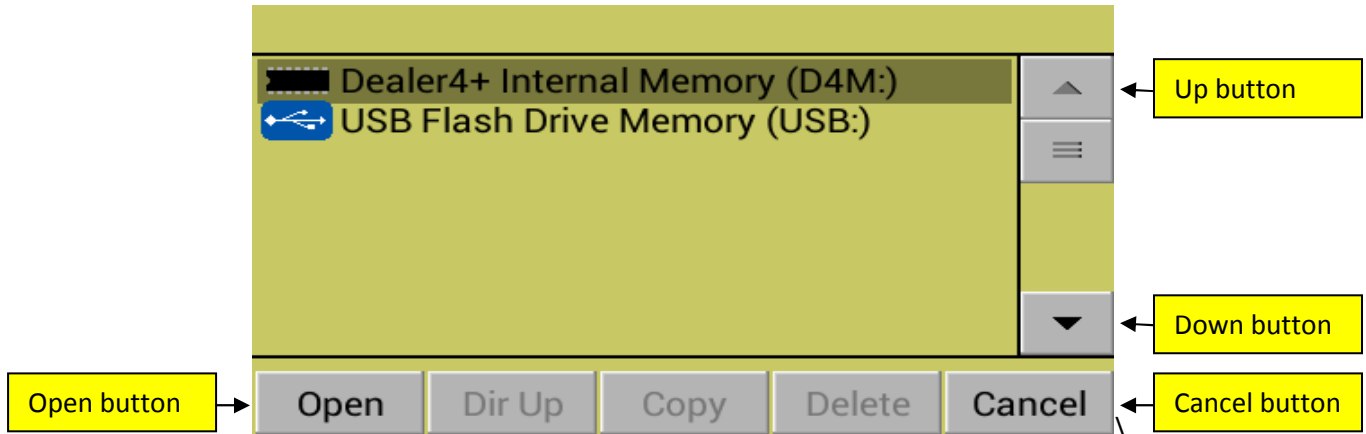


Current Display Firmware version number and time and date are displayed at the top of the Main Screen. Then in the middle of the screen information about the loaded Boardset is displayed. These fields may be empty when a machine is first turned on and no Boardset has been loaded. On the bottom line there are three function buttons:

- **Load Boardset** - go to the **Load Screen** from where a Boardset can be loaded for dealing.
- **Deal** - go to **Deal Screen** - to deal current Boardset. This button is inactive (grayed) when the machine is first turned on because there is no Boardset loaded - so there is nothing to deal. It will become active after a Boardset is loaded.
- **Switch off** - press this button to turn off the machine

3.2. Load Screen

To perform card dealing it is first necessary to load a Boardset. Press the Load Boardset button to open the Load Screen:



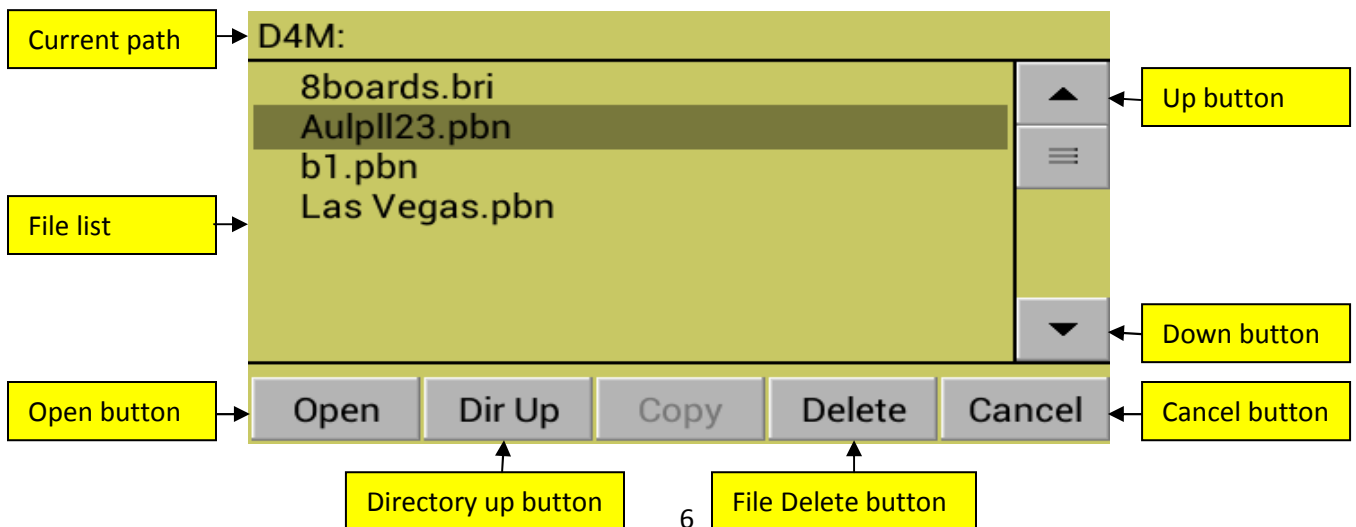
On the top level of the Load Screen these are one or the two "drives" displayed:

- Dealer4 Internal Memory - represent internal memory storage
- USB Flash Drive shows the USB Flash Drive (Memory Stick or Pen Drive) which is actually connected to the Dealer4+. This line does not exist when there is no Flash Drive connected.

Up and **Down** buttons allows the selection of a particular "drive". It is also possible to select "drive" by directly pressing it. The **Open** button show the contents of the selected drive, and the **Cancel** button returns to the Main Screen without loading the Boardset.

3.2.1. Dealer4+ Internal Memory functions

When Dealer4 Internal Memory is selected, the next level of the Load Screen will appear. It shows the contents of this internal memory:



On the top of the screen, the current path is displayed. Because the Dealer4+ Internal Memory does not support subdirectories only the drive symbol (D4M:) is shown. Below is the file list area. Seven files are shown on the screen. If there are more files in the memory, the file list can be scrolled through using the **Up** and **Down** buttons. These buttons are also used to select a particular file. A File can also be selected by directly pressing on it.

The **Up** and **Down** buttons have the ability to be "held down" - they can be pressed continuously for fast scrolling, This is especially useful when a large number of files exists in the memory.

The Action buttons at the bottom of the screen have the following functions:

- **Open button** - load selected file into Dealer4+ for dealing.
- **Directory Up button** - return to the top level of Load Screen.
- **File Delete button** - delete selected file from Dealer4+ Internal Memory
- **Cancel Button** - return to Main Screen without loading.

When a file is correctly loaded, the Dealer4+ returns to the Main Screen:



Board numbers and file name are shown now on the screen and indicate that a Boardset is loaded. Information fields (Event name, Event Site and Event date) are only filled if this information exists in the loaded file. The **Deal** button is now active so it is possible to deal -see chapter 3.3 for more information.

The current version of Display Firmware - ver 2.10 supports PBN, BRI and DUP bridge files types. Other types will be added in the next version of the Display Firmware

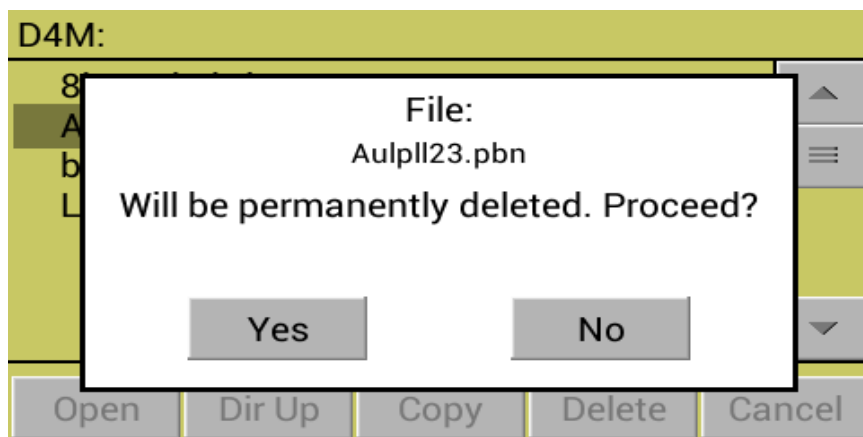
If any errors happen during Boardset loading, it will be displayed on the screen. The most common error is when an incorrect file (not bridge file) is selected to be loaded:



In the case of any loading errors, the Dealer4+ returns to the Main Screen. If the right file is selected but is corrupted or has an incorrect format, more specific information about the problem is displayed - for example:



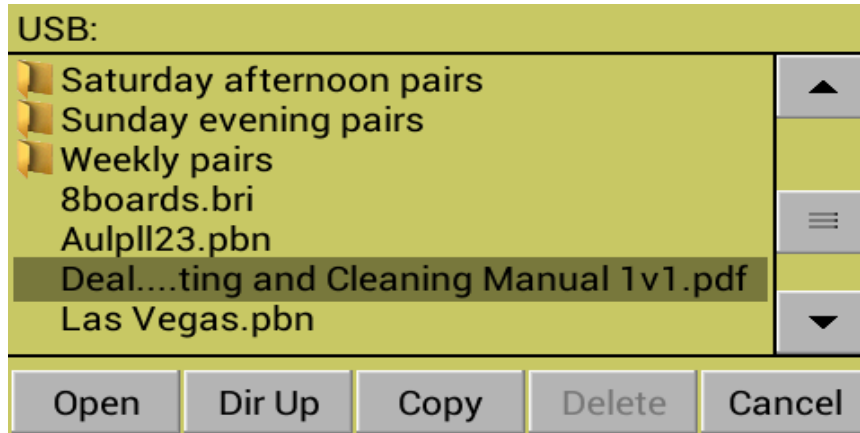
When the **Delete** button is pressed it will bring up a confirmation message:



Pressing **Yes** will delete the selected file from the Dealer4+ Internal Memory. It is not possible to reverse this operation so use it with caution.

3.2.2. USB Flash Drive Memory functions

The main method to transfer files to Dealer4+ for dealing is to use a Flash Drive. When connected, it appear on the top level of the Load Screen as shown in chapter 3.2. After it is selected and opened it will show the contents:

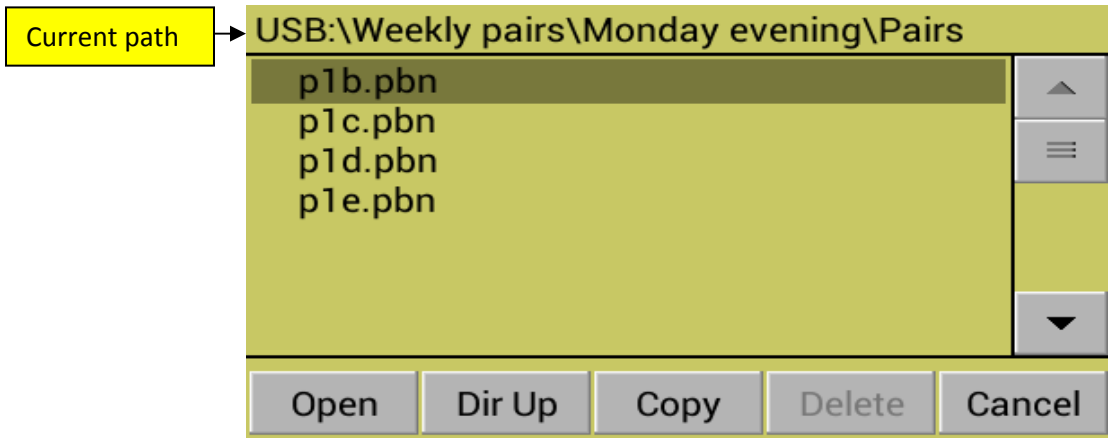


The yellow file picture on the left side of the name indicates a subdirectory. Subdirectories can be opened using the **Open** button. A line without the file picture is the file name. A file name can be loaded using the same **Open** button but only if it is a valid bridge file.

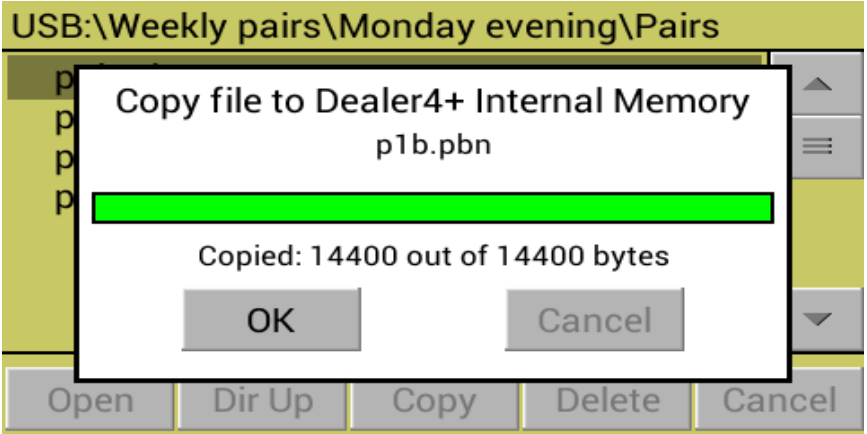
The Dealer4+ supports long file names. If a file name is too long to fit on the screen it is displayed truncated. On the sample screen above, the selected file name is too long: "Dealer4 Maintenance Adjusting and Cleaning Manual 1v1.pdf". If a name is too long, the Dealer4+ displays first 4 characters then four dots (...) to indicate truncation and then the last number of characters to fill all available space. This is the way long file names and paths are displayed on all screens. Due to this truncation, it is recommended to keep file names shorter than 30-35 characters.

All files and directories existing on the Flash Drive are displayed. They are sorted alphabetically with subdirectories shown first.

There is no limit for number of nested subdirectories however the total length of the path cannot be longer then 255 characters. The current path is shown at the top of the screen:



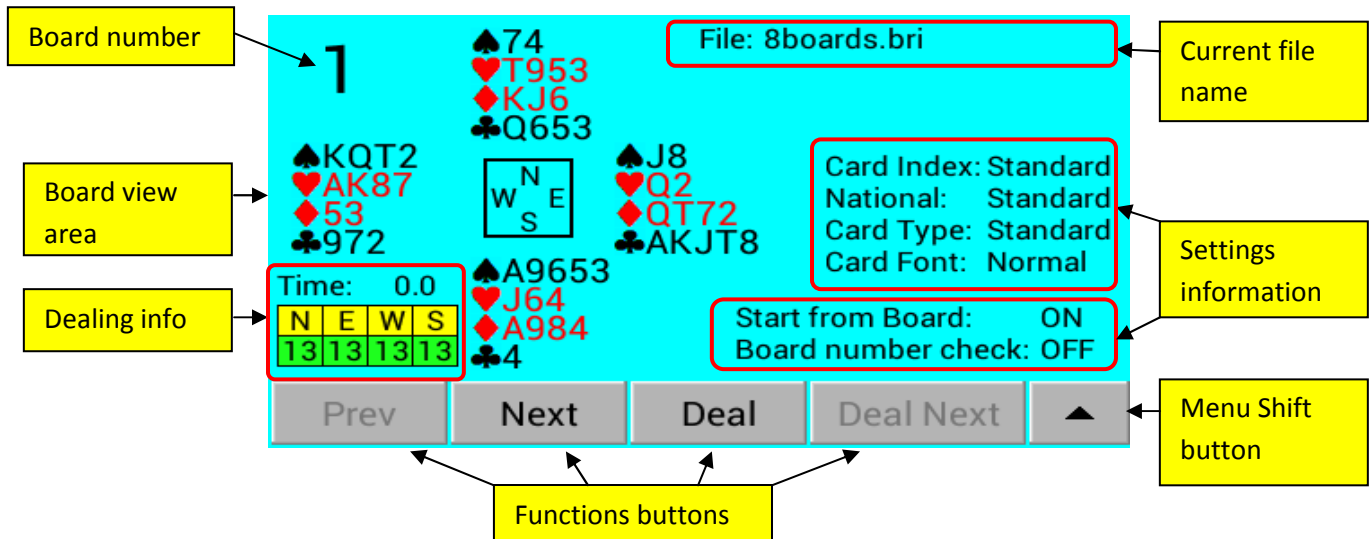
A selected file can be loaded for dealing using the **Open** button or it can be copied to the Dealer4+ Internal Memory. When the **Copy** button is pressed, a progress bar and then a confirmation screen will appear:



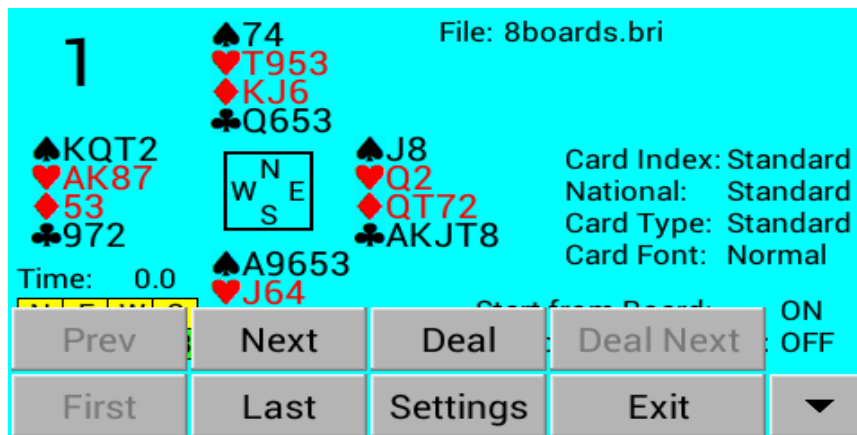
It is possible to copy any file but there is no point copying files other than bridge files (PBN, BRI or DUP).

3.3. Deal Screen

After a file is successfully loaded, the **Deal** button becomes active on the Main Screen. Pressing it will display the Deal Screen:



Not all functions buttons are visible on this screen. To show all buttons - press the Menu shift button. Current buttons will be shifted up and additional buttons will appear on the bottom of the screen. Pressing the Menu shift button again will hide these buttons:



Following functions are available:

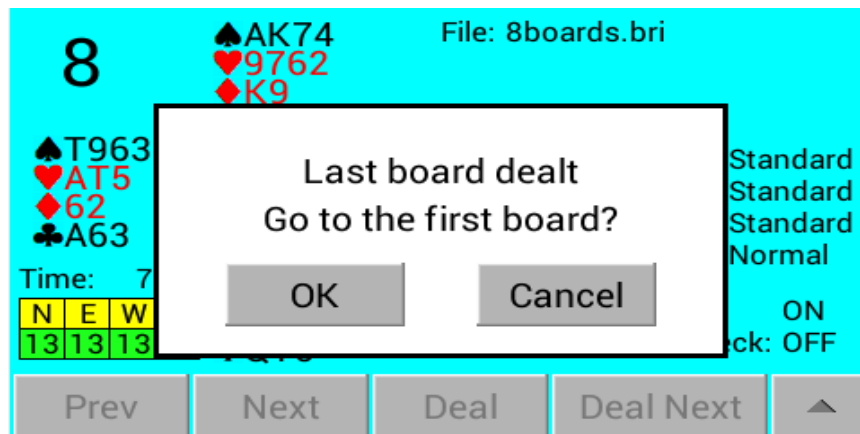
- **Prev** - go to the previous board - this button is inactive when first board in the set is displayed.
- **Next** - go to the next board - this button is inactive if last board in the set is displayed.
- **First** - go to first board - this button is inactive when first board in the set is displayed.
- **Last** - go to the last board - this button is inactive if last board in the set is displayed.
- **Deal** - deal current board

- **Deal Next** - advance to the next board and deal it - this button become active after the current board is successfully dealt.
- **Settings** - go to the Settings screen to change dealing settings. See chapter 3.4 for more information.
- **Exit** - Exit the **Deal Screen** and go back to the **Main Screen**.

During dealing, the time of dealing is displayed and numbers under "NESW" shows actual number of cards in each pocket.

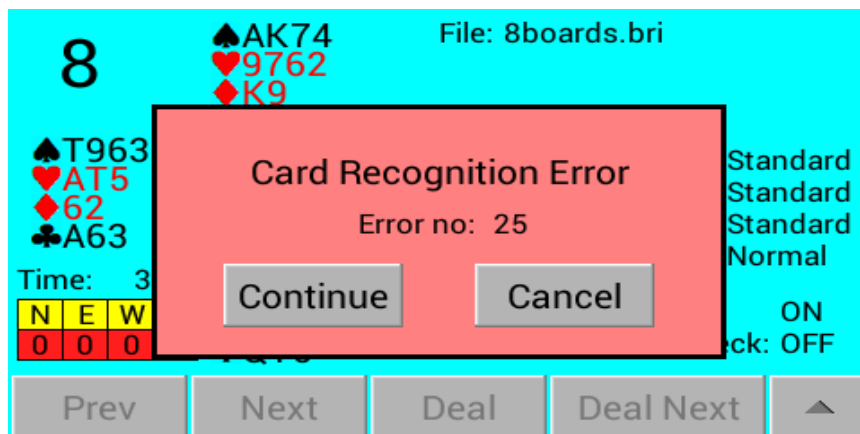
The Start key on the front panel of the machine acts as a **Deal Next** button if this button is active or **Deal** button if **Deal Next** is inactive. It will also act as a **Continue** button if an error is displayed.

When the last board in the set is successfully dealt, the following message will appear:



When **OK** is pressed, the Dealer4+ goes back to the first board and is ready to deal the same set again. Pressing **Cancel** will stay on the last board.

If any errors happen during dealing they are displayed on the screen and a double beep sound is played:



Press **Continue** to repeat or retry and press **Cancel** to cancel dealing.

All errors are exactly the same as for the Dealer4 machine. For more information refer to Dealer4 Software User Manual Appendix B.

3.4. Settings Screen

Because there is not enough room to implement settings setup on the **Deal Screen** (as it is done in the PC software), the Dealing settings setup is moved to a separate screen. It is accessible by pressing the **Settings** button on the **Deal Screen**:

The screenshot shows a settings screen with a light green background. It contains several sections of options:

- Card Index:** Three radio button options: Small, Standard (selected), and Large (Jumbo).
- Card Type:** Two radio button options: Standard (selected) and Framed.
- National Settings:** A list of seven radio button options: Standard(AKQJ) (selected), French1 (ARDV), French2 (1RDV), German (AKDB), Dutch (AHVB), Danish (EKDB), and Swedish (EKDKn).
- Card Font:** Three radio button options: Fine, Normal (selected), and Bold.
- Display:** Two radio button options: Show (selected) and Hide.
- Two checkboxes at the bottom: Start dealing when a board is inserted and Check Board Number.
- A grey **Done** button is located at the bottom right.

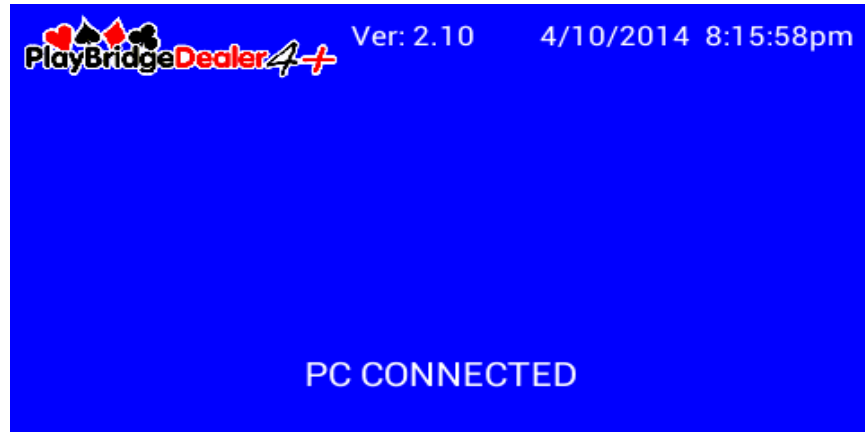
Settings can be changed by directly pressing them. Settings are automatically remembered in the machine so the next time the machine is turned on and the Deal screen is entered, all the settings will be the same.

Dealing settings are exactly the same as on the PC software so for more information please refer to Dealer4 Software User Manual chapter 4.2

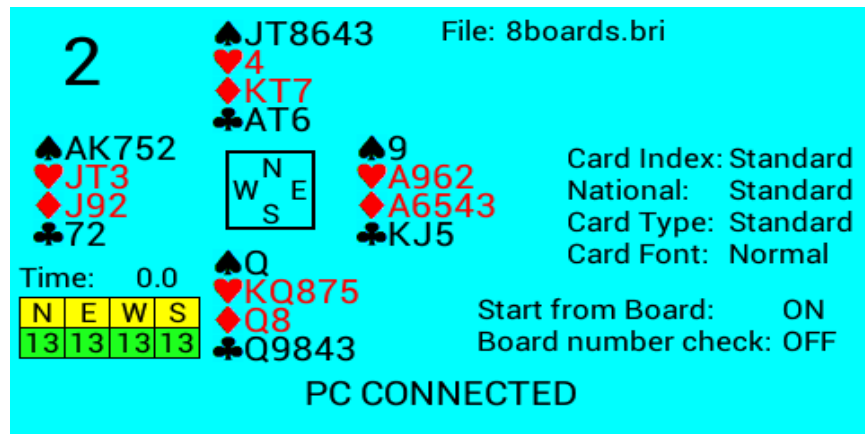
When the machine is operated from the PC, those settings will overwrite the current settings stored in the Dealer4+.

4. Dealer4+ operation from PC

When the Dealer4+ is connected to the PC and Deal, Maintenance or Display Control functions have been entered, the PC will take control over the machine. The Front Screen will display some information but no control buttons will be available. The **Main Screen** will look like the one shown below:



When the Deal function is entered, the Front Display will mirror the information from the PC:



If an error happens during dealing, the error information is also displayed both on the PC and the Front Display but as there are no control buttons in this mode, all actions have to be performed on the PC.

2

♠JT8643
♥4
♦KT7

File: 8boards.bri

♠AK75
♥JT3
♦J92
♣72

Time: 3

N	E	W
0	0	0

Card Recognition Error

Error no: 25

Standard
Standard
Standard
Normal

ON
ck: OFF

PC CONNECTED

5. Future development

Current Display Firmware version 2.10 is the first release. The Dealer4 design team is continuously working to add more features to it. Eventually in the future, the Dealer4+ will have the same functionality whether it is connected to a PC or not. Some of the improvements for the next revisions will be:

- Add more file types like: BRE, DGE, ALL, CVS.
- Add dealing subset and dealing multiple copies of the same more board.
- Add some Maintenance functions
- Add subdirectories to Internal Memory.
- Possibility to generated boards and save them to the Flash Drive

We appreciate any comments and input from users as this will help us to improve our product and make the Dealer4+ machine ever greater. All comments should be sent to support@dealer4.com